

SEMENTES DO AMANHÃ

Gonzaguinha
Arranjo: Sergio Rouver

Flauta $\text{♩} = 75$

Clarinete em Sib 1

Clarinete em Sib 2

Clarinete em Sib 3

Sax alto 1,2

Sax tenor 1,2

Saxofone baritono

Trompa em F#1

Trompa em F#2

Trompa em F#3

Bombardino

Trompete em Sib 1

Trompete em Sib 2

Trompete em Sib 3

Trombone 1

Trombone 2

Trombone 3

Baixo em Sib

Drum Set

Baixo elétrico $\text{♩} = 75$

D F#m Em A D F#m Em A

The score is for a large ensemble in a key of four sharps (F#, C#, G#, D#). It begins at measure 7. The instruments and their parts are as follows:

- Fl. (Flute):** Melodic line with slurs and dynamics.
- Cl. (Clarinet):** Melodic line with slurs and dynamics.
- Sax. al. (Saxophone Alto):** Harmonic accompaniment with slurs and dynamics.
- Sax. ten. (Saxophone Tenor):** Harmonic accompaniment with slurs and dynamics.
- Sax. bar. (Saxophone Baritone):** Harmonic accompaniment with slurs and dynamics.
- Tr. (Trumpet):** Three staves with melodic and harmonic parts, including slurs and dynamics.
- Bomb. (Bombardone):** Harmonic accompaniment with slurs and dynamics.
- Tpte. (Trumpet):** Three staves with melodic and harmonic parts, including slurs and dynamics.
- Trne. (Trombone):** Three staves with melodic and harmonic parts, including slurs and dynamics.
- Baixo (Bass):** Harmonic accompaniment with slurs and dynamics.
- Dr. (Drums):** Rhythmic accompaniment with slurs and dynamics.
- Baixo e. (Bass Electric):** Harmonic accompaniment with slurs and dynamics.

Dynamic markings include *f* (forte) throughout the score. Chord progressions are indicated at the bottom of the page:

A D F#m Em A D F#m Am D7 D/F#

Fl.

Cl.

Cl.

Cl.

Sax. al.

Sax. ten.

Sax. bar.

Tr.

Tr.

Tr.

Bomb.

Tpte.

Tpte.

Tpte.

Trne.

Trne.

Trne.

Baixo

Dr.

Baixo e.

6 8 10

G A/G F#m Bm Em A Am D7 G A/G F#m Bm Em

Fl.

Cl.

Cl.

Cl.

Sax. al.

Sax. ten.

Sax. bar.

Tr.

Tr.

Tr.

Bomb.

Tpte.

Tpte.

Tpte.

Trne.

Trne.

Trne.

Baixo

Dr.

Baixo e.

12

A Am D7 G A D F#m Em A D F#m Em A

Fl. *p*

Cl. *p*

Cl. *p*

Cl. *p*

Sax. al. *p*

Sax. ten. *p*

Sax. bar.

Tr. *p*

Tr. *p*

Tr. *p*

Bomb. *p*

Tpte. *p*

Tpte. *p*

Tpte. *p*

Trne. *p*

Trne. *p*

Trne. *p*

Baixo

Dr. 2

Baixo e. D F#m Em A D F#m Em A D F#m Em A

Fl.

Cl.

Cl.

Cl.

Sax. al.

Sax. ten.

Sax. bar.

Tr.

Tr.

Tr.

Bomb.

Tpte.

Tpte.

Tpte.

Trne.

Trne.

Trne.

Baixo

Dr.

Baixo e.

4 6 8

D F#m Am D7 D/F# G A/G F#m Bm Em A Am D7

Fl.

Cl.

Cl.

Cl.

Sax. al.

Sax. ten.

Sax. bar.

Tr.

Tr.

Tr.

Bomb.

Tpte.

Tpte.

Tpte.

Trne.

Trne.

Trne.

Baixo

Dr.

Baixo e.

G A/G F#m Bm Em A Am D7 G A

Fl.

Cl.

Cl.

Cl.

Sax. al.

Sax. ten.

Sax. bar.

Tr.

Tr.

Tr.

Bomb.

Tpte.

Tpte.

Tpte.

Trne.

Trne.

Trne.

Baixo

Dr.

Baixo e.

D A D G A D9

SEMENTES DO AMANHÃ

Flauta

Gonzaguinha
Arranjo: Sergio Rouver

♩=75

4

p *f*

9

12

17

22

26

p

31

35

42

45

SEMENTES DO AMANHÃ

Clarín

Gonzaguinha
Arranjo: Sergio Rouver

♩=75

4

p *f*

9

12

17

22

26

p

31

35

42

45

SEMENTES DO AMANHÃ

Clarín

Gonzaguinha
Arranjo: Sergio Rouver

♩=75

4

p *f*

9

12

17

22

26

p

31

35

42

45

SEMENTES DO AMANHÃ

Clarín

Gonzaguinha
Arranjo: Sergio Rouver

♩=75

4

p *f*

9

12

17

22

26

p

31

35

42

45

SEMENTES DO AMANHÃ

Sax

Gonzaguinha
Arranjo: Sergio Rouver

♩=75



5



11



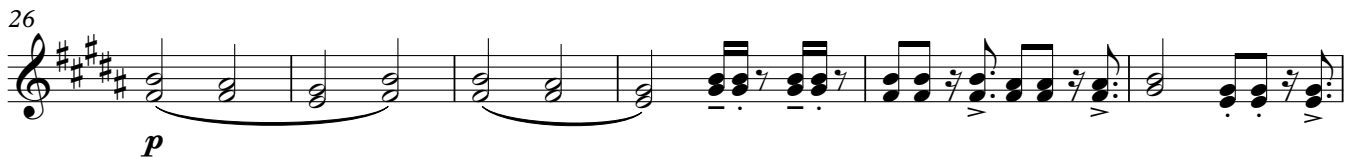
16



22



26



32



37



43



SEMENTES DO AMANHÃ

Sax

Gonzaguinha
Arranjo: Sergio Rouver

♩=75

5

11

16

21

25

31

36

41

44

SEMENTES DO AMANHÃ

Saxof

Gonzaguinha
Arranjo: Sergio Rouver

♩=75

5

11

16

21

26

31

36

41

44

SEMENTES DO AMANHÃ

Trom

Gonzaguinha
Arranjo: Sergio Rouver

♩=75

5

p *f*

11

16

21

26

p

32

37

42

45

SEMENTES DO AMANHÃ

Trom

Gonzaguinha
Arranjo: Sergio Rouver

♩=75

5

p *f*

11

16

21

26

p

32

37

42

45

SEMENTES DO AMANHÃ

Trom

Gonzaguinha
Arranjo: Sergio Rouver

♩=75

5

11

17

22

26

32

38

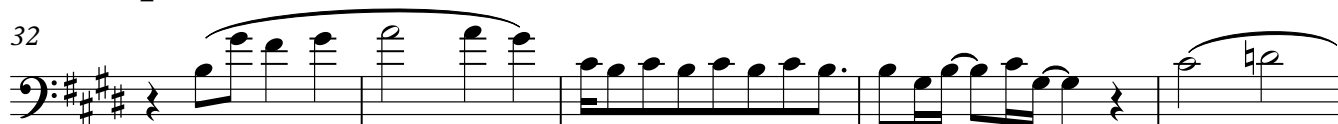
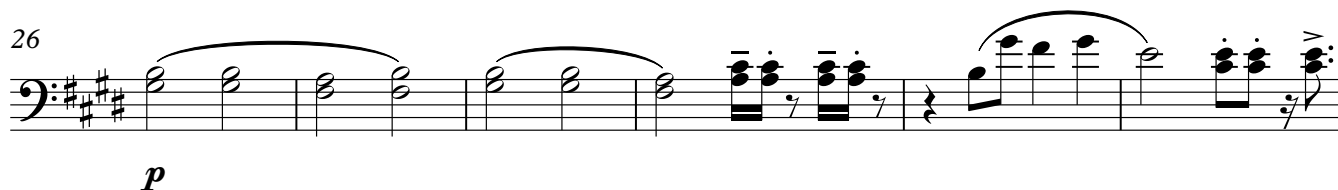
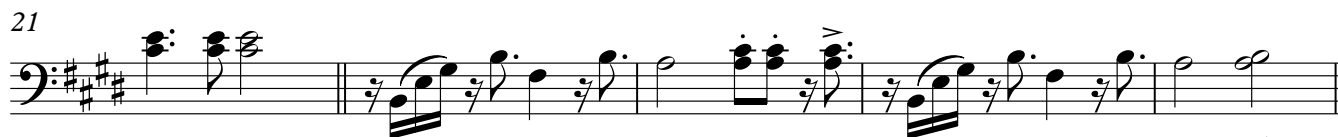
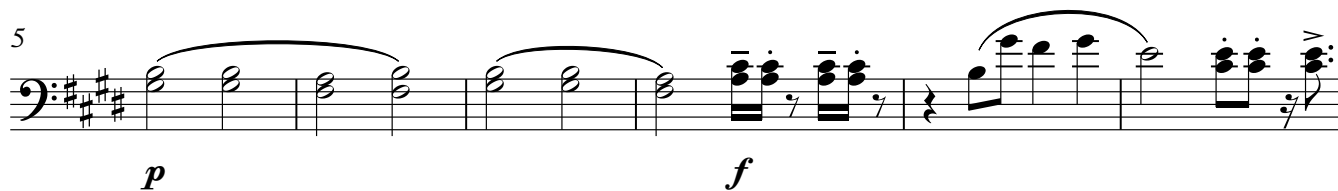
43

SEMENTES DO AMANHÃ

Bomb

Gonzaguinha
Arranjo: Sergio Rouver

♩=75



SEMENTES DO AMANHÃ

Trom

Gonzaguinha
Arranjo: Sergio Rouver

♩=75

5

13

20

25

33

39

43

f

>

>

SEMENTES DO AMANHÃ

Trom

Gonzaguinha
Arranjo: Sergio Rouver

♩=75

5

13

20

25

33

39

43

SEMENTES DO AMANHÃ

Trom

Gonzaguinha
Arranjo: Sergio Rouver

♩=75

5

13

18

22

26

34

40

44

f

SEMENTES DO AMANHÃ

Trom

Gonzaguinha
Arranjo: Sergio Rouver

♩=75

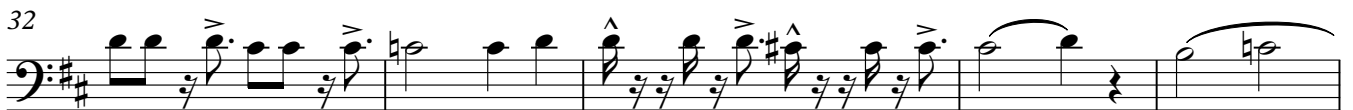


p

f



p



SEMENTES DO AMANHÃ

Trom

Gonzaguinha
Arranjo: Sergio Rouver

♩=75

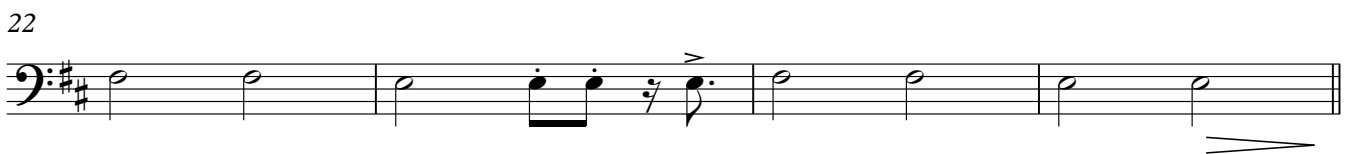


SEMENTES DO AMANHÃ

Trom

Gonzaguinha
Arranjo: Sergio Rouver

♩=75



SEMENTES DO AMANHÃ

Baixo

Gonzaguinha
Arranjo: Sergio Rouver

♩=75



SEMENTES DO AMANHÃ

Drum

Gonzaguinha
Arranjo: Sergio Rouver

♩=75

The drum score is written on a single staff with a 4/4 time signature. It begins with a tempo marking of ♩=75. The notation includes various rhythmic patterns: eighth notes, quarter notes, and eighth rests, often grouped with beams and 'x' marks above them. There are several measures with repeat signs (slashes with dots) and some measures with specific counts (3, 2, 4, 6, 8, 10, 12) above them. A dynamic marking of *f* (forte) is placed below the staff at measure 7. The score concludes with a final double bar line and a fermata-like symbol.

5 3 2 4

13 6 8 10 12

21

24 2

29 2 4

35 6 8 10 12

43 2

SEMENTES DO AMANHÃ

Baixo

Gonzaguinha
Arranjo: Sergio Rouver

♩=75

D F#m Em A D F#m Em A

5 **3** A D F#m Em A D F#m

f

12 Am D7 D/F# G A/G F#m Bm Em A Am D7

17 G A/G F#m Bm Em A Am D7 G A

22 D F#m Em A D F#m Em A

26 D F#m Em A D F#m Em A D F#m

31 Em A D F#m Am D7 D/F# G A/G F#m Bm

36 Em A Am D7 G A/G F#m Bm Em

41 A Am D7 G A D

44 A D G A D9

The image shows a bass line for the song 'SEMENTES DO AMANHÃ'. It consists of ten staves of music in a 4/4 time signature with a key signature of one sharp (F#). The tempo is marked as quarter note = 75. The music is written in bass clef. Above each staff, the corresponding chords are listed. The first staff starts with a tempo marking and a series of chords: D, F#m, Em, A, D, F#m, Em, A. The second staff begins with a measure containing a '3' (triple), followed by chords A, D, F#m, Em, A, D, F#m. A dynamic marking 'f' (forte) is placed below the second staff. The third staff has chords Am, D7, D/F#, G, A/G, F#m, Bm, Em, A, Am, D7. The fourth staff has chords G, A/G, F#m, Bm, Em, A, Am, D7, G, A. The fifth staff has chords D, F#m, Em, A, D, F#m, Em, A. The sixth staff has chords D, F#m, Em, A, D, F#m, Em, A, D, F#m. The seventh staff has chords Em, A, D, F#m, Am, D7, D/F#, G, A/G, F#m, Bm. The eighth staff has chords Em, A, Am, D7, G, A/G, F#m, Bm, Em. The ninth staff has chords A, Am, D7, G, A, D. The tenth and final staff has chords A, D, G, A, D9.